

National Weather Service Forecast Office

Accessing the National Weather Service at Albany, New York:

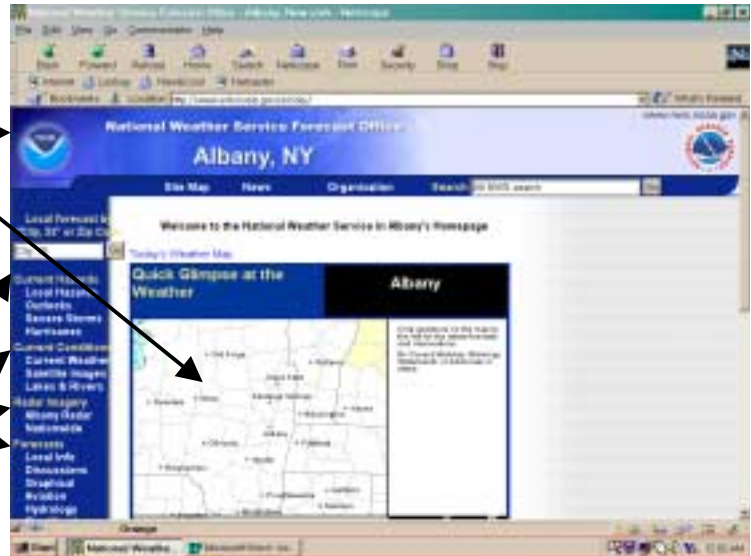
1. Type the following into the URL Location/Address Box:

<http://www.erh.noaa.gov/er/aly/>

2. You should see the following Screen:

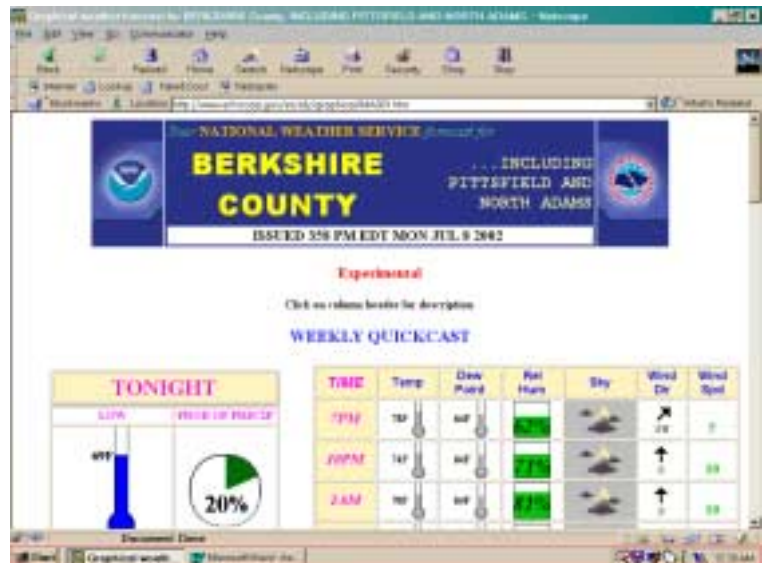
3. There is a Clickable Map listing the various Counties and Cities that the NWS at Albany, NY is responsible for.

4. You will also see Sub-topic Categories such as Current Hazards, Current Conditions, Radar Imagery, Forecasts, etc., located in the Left Column.



5. Simply click on the desired location on the Map to get a Detailed 7-day Forecast. Print out a Detailed 7-day Forecast and keep track of how accurate it is in the Journal Section of your Notebook.

6. You can scroll down and click on the Graphical Link under the FORECAST CATEGORY. You can then click on the desired county to two EXPERIMENTAL Forecasts...the three (3) Hour and the WEEKLY QUICKCAST as shown here:



7. You are to print out the WEEKLY QUICKCAST and keep track of how accurate the forecasts are in the Journal Section of your Notebook.

8. Various Sub-topic categories:

- Current Hazards - Great source of information for local, state-by-state, or national outlooks on severe weather including tropical storms.
- Current Conditions - Gives current weather conditions in text and/or graphical formats. You can get Hydrology/Flooding information along with the High & Low temperatures along with amount of rainfall of various cities and more. Example: Click on Current Weather → Precipitation Data (including snowfall) → 24 Hour Summary and Precipitation Sheet (STP) to get high/low temperatures and amount of rainfall/snowfall. Follow other links for other information.
- Radar Imagery - Local and national radar images and storm intensity.
- Forecasts - Latest forecasts, **graphical weather forecast**, Hydrology, Fire Weather and more.
- Weather Safety – Basic safety tips for various weather conditions.
- Miscellaneous – Model data FOUS & NGM specific weather data forecasts.



The Weather Channel:

Type the following into the URL
Location/Address Box:

<http://www.weather.com/index.html>

1. Here you can access a variety of maps relating to weather (pollen, air quality, skin protection, etc.), travel forecasts, and more. Simply follow the links.

